



Cedar House, 39 - 41 Nottingham Place, London,

- £900 Weekly
- Available Now
- Furnished
- Two double bedrooms
- One bathroom
- Guest WC
- Balcony
- Quiet central location
- Approx. 770 sq ft
- Excellent transport links

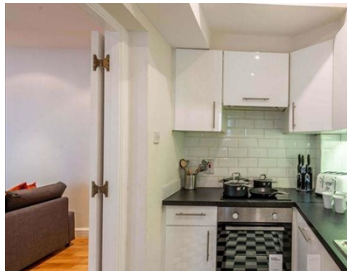
Well maintained two double bedroom apartment, in quiet central location with a private balcony.

Offering approximately 780 sq ft of internal accommodation, the apartment has well apportioned bedrooms with built-in storage, one bathroom with an additional guest WC.

Extremely well located for transport including Baker Street and Marylebone stations, as well as the large open spaces of Regents Park and shopping and amenities of Marylebone High Street and Oxford Street just a short walk away.

TYERS • YAN

MANAGEMENT



TYERS • YAN

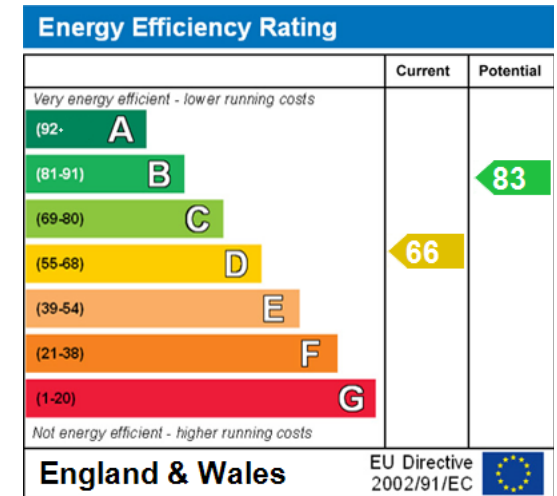
Tyers Yan Management Limited

Berkeley Square House, Berkeley Square, Mayfair, London, W1J 6BD

Company No. 121 074 19

TYERS • YAN

MANAGEMENT



The graph shows this property's current and potential energy efficiency.

Properties are given a rating from A (most efficient) to G (least efficient).

Properties are also given a score. The higher number the lower your fuel bills are likely to be.

For properties in England and Wales:

the average energy rating is D
the average energy score is 60