



Huntley Street, London, WC1E 6DD

- £775 Weekly
- Available 16 September 2026
- Furnished
- One double bedroom
- One bathroom
- 1st floor
- High ceilings
- Quiet central location
- Refurbished

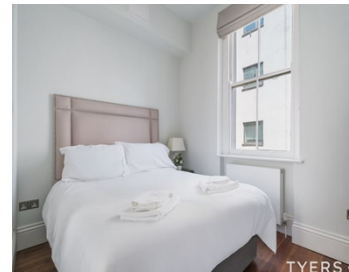
Refurbished one bedroom apartment with high ceilings and in a quiet central location and forming part of this sensitively restored Grade II listed building with just two other apartments.

The apartment has over 430 sq ft of internal accommodation, with an open-plan fitted kitchen including an integrated fridge/freezer, dishwasher and washing machine.

This small, well maintained building is conveniently located just moments away from the cafes and restaurants along Tottenham Court Road and transport links including Euston, Warren Street and Goodge Street stations.

TYERS • YAN

MANAGEMENT

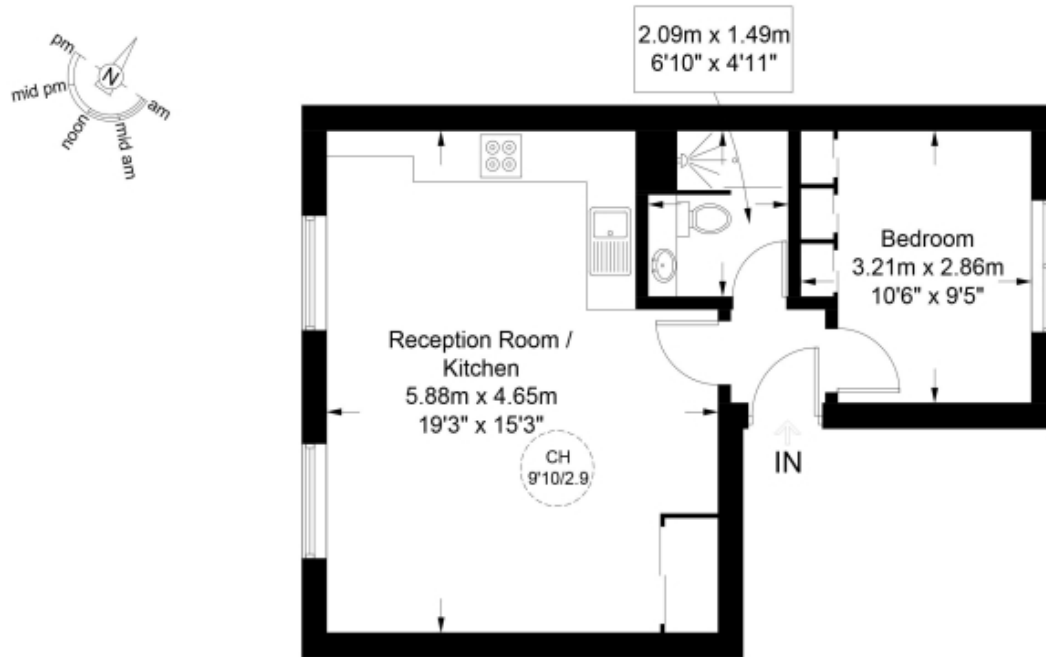


TYERS • YAN


TYERS • YAN MANAGEMENT

Huntley Street, WC1E

Approximate Gross Internal Area = 434 sq ft / 40.3 sq m



First Floor

Energy Efficiency Rating		
	Current	Potential
Very energy efficient - lower running costs		
(92-100) A		
(81-91) B		
(69-80) C	71	77
(55-68) D		
(39-54) E		
(21-38) F		
(1-20) G		
Not energy efficient - higher running costs		
England & Wales	EU Directive 2002/91/EC 	

The graph shows this property's current and potential energy efficiency.

Properties are given a rating from A (most efficient) to G (least efficient).

Properties are also given a score. The higher the number the lower your fuel bills are likely to be.

For properties in England and Wales:

the average energy rating is D
the average energy score is 60

TYERS • YAN
MANAGEMENT

This plan is for layout guidance only and is not drawn to scale unless stated. All dimensions, including windows, doors, and the Total Gross Internal Area (GIA), are approximate. For precise measurements, please consult a qualified architect or surveyor before making any decisions based on this plan.

