



Green Bank, London, E1W, E1W 2QB

- £2,400 Monthly
- Available 27 July 2026
- Furnished
- Two double bedrooms
- One bathroom
- Ground floor
- Quiet location
- Utility room
- Moments from transport links

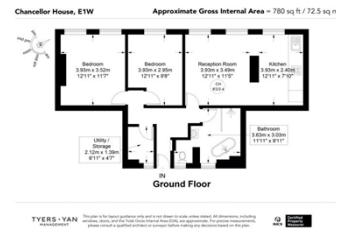
Refurbished two double bedroom apartment in a quiet residential area.

Comprising a spacious reception room with separated kitchen / dining area, the apartment also has a good sized utility room for excellent additional storage and laundry. There are two good sized and well apportioned double bedrooms as well as a spacious family bathroom with a walk in shower and free standing bath.

Conveniently located just a short walk away from Wapping station, it also benefits from amenities and parks nearby.

TYERS • YAN

MANAGEMENT

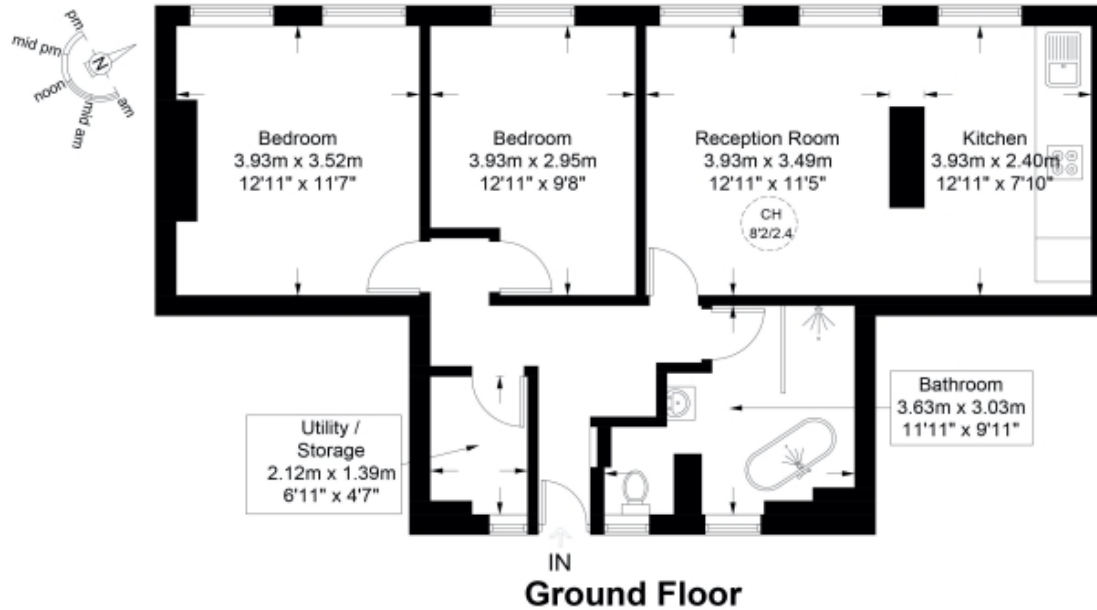


TYERS • YAN

TYERS • YAN MANAGEMENT

Chancellor House, E1W

Approximate Gross Internal Area = 780 sq ft / 72.5 sq m



TYERS • YAN
MANAGEMENT

This plan is for layout guidance only and is not drawn to scale unless stated. All dimensions, including windows, doors, and the Total Gross Internal Area (GIA), are approximate. For precise measurements, please consult a qualified architect or surveyor before making any decisions based on this plan.



TYERS • YAN

Energy Efficiency Rating		
	Current	Potential
Very energy efficient - lower running costs		
(92- A		
(81-91) B		78
(69-80) C		
(55-68) D	67	
(39-54) E		
(21-38) F		
(1-20) G		
Not energy efficient - higher running costs		
England & Wales	EU Directive 2002/91/EC	

The graph shows this property's current and potential energy efficiency.

Properties are given a rating from A (most efficient) to G (least efficient).

Properties are also given a score. The higher number the lower your fuel bills are likely to be.

For properties in England and Wales:

the average energy rating is D
the average energy score is 60